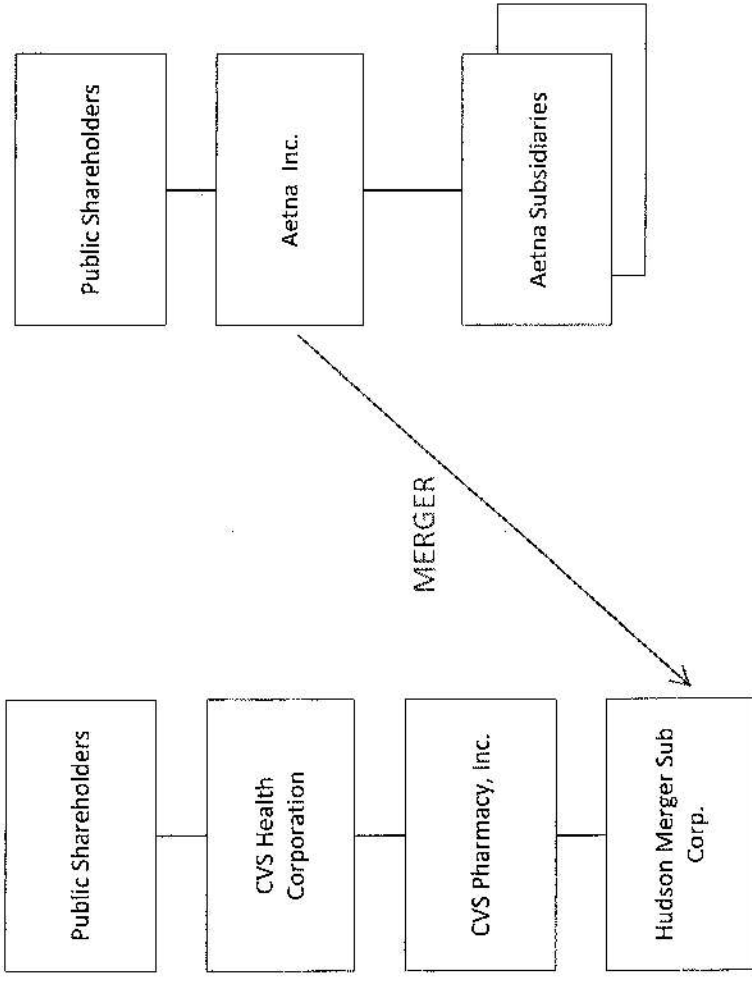


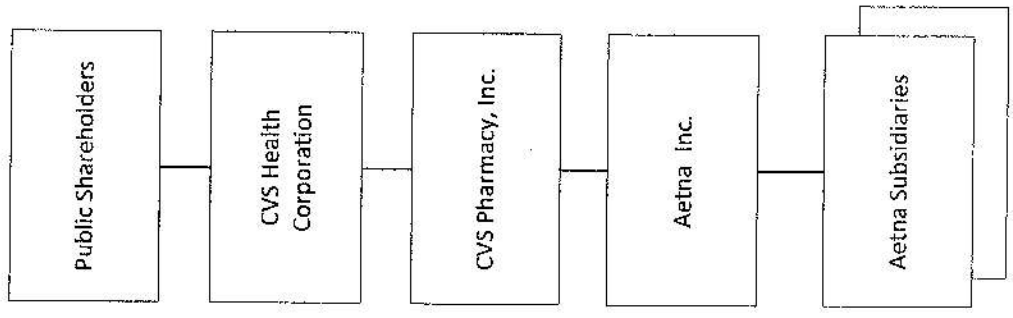
**Exhibit 3-C**

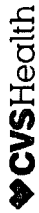
**Pro Forma Organizational Chart of  
CVS Health and its Affiliates  
Following the Transaction**

**Corporate Structure Chart  
BEFORE**

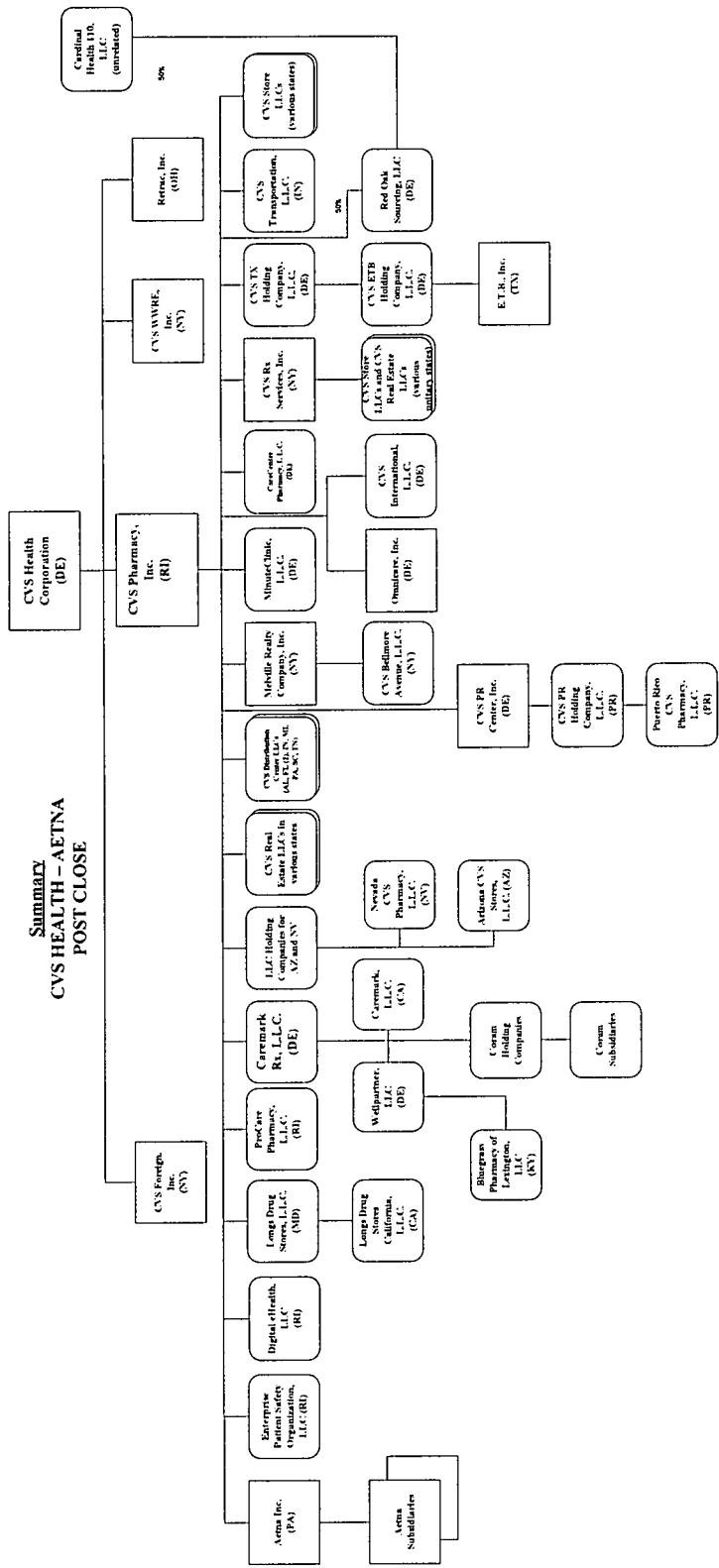


**Corporate Structure Chart  
AFTER**



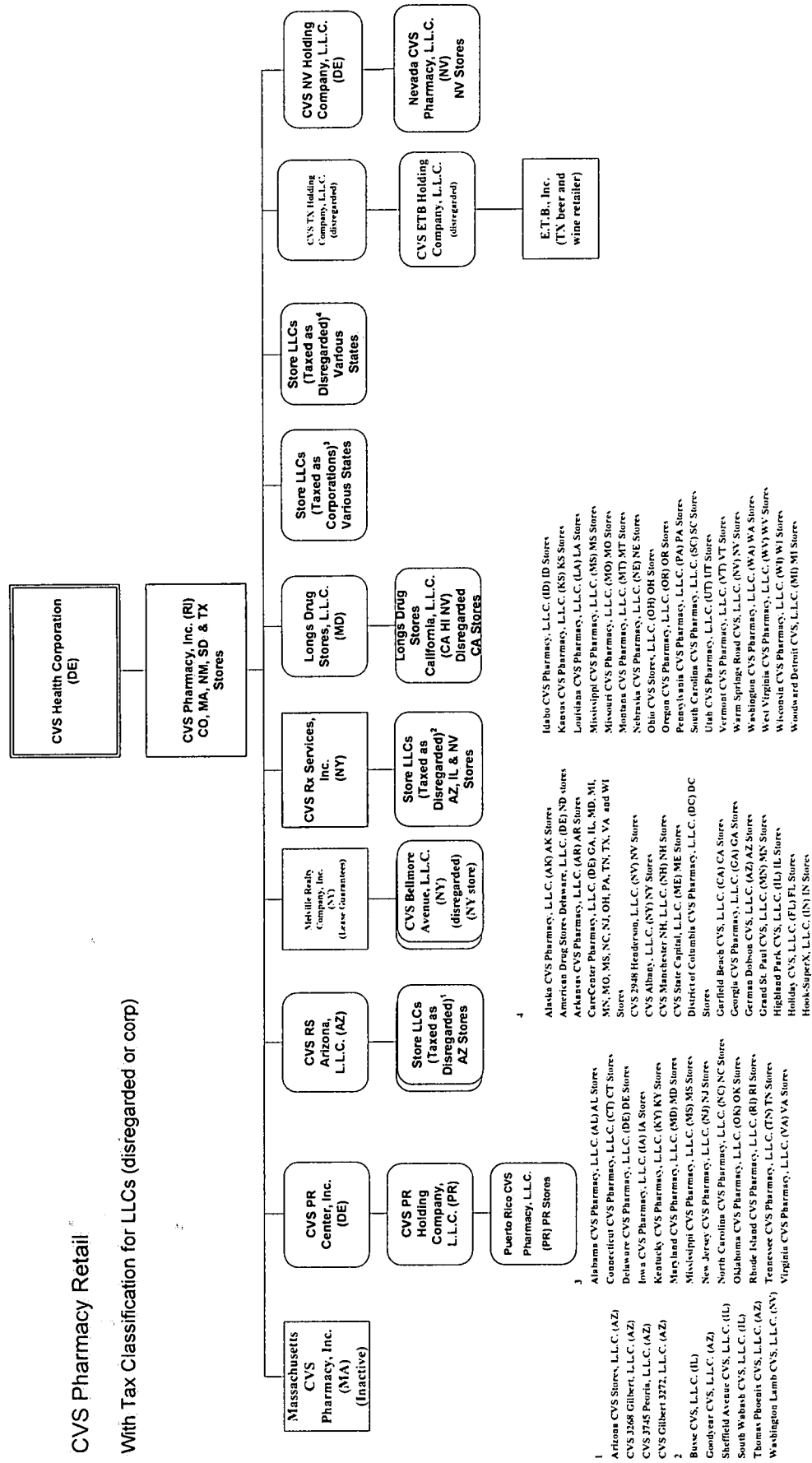


**Summary  
CVS HEALTH – AETNA  
POST CLOSE**



## CVS Pharmacy Retail

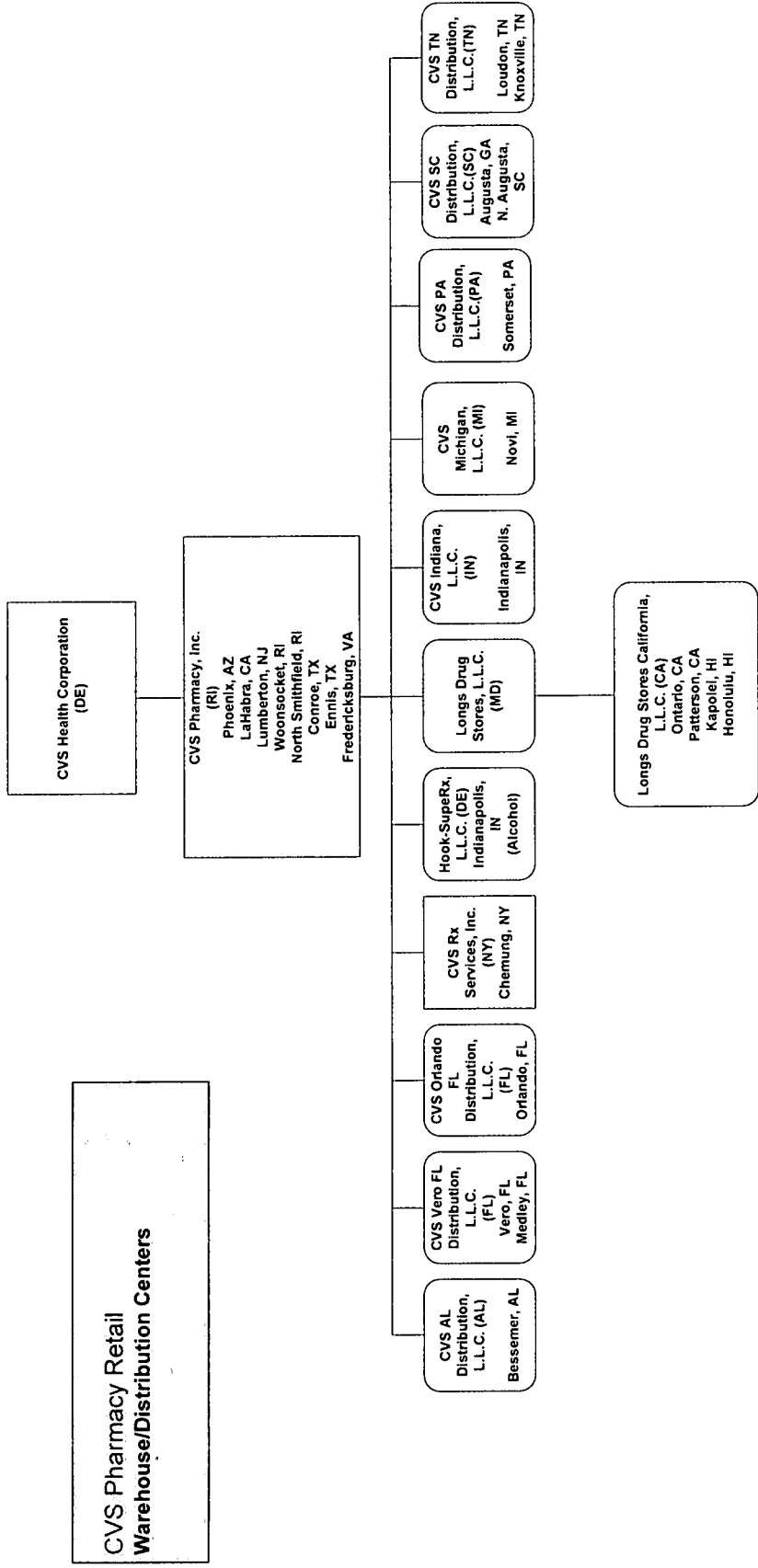
With Tax Classification for LLCs (disregarded or corp)



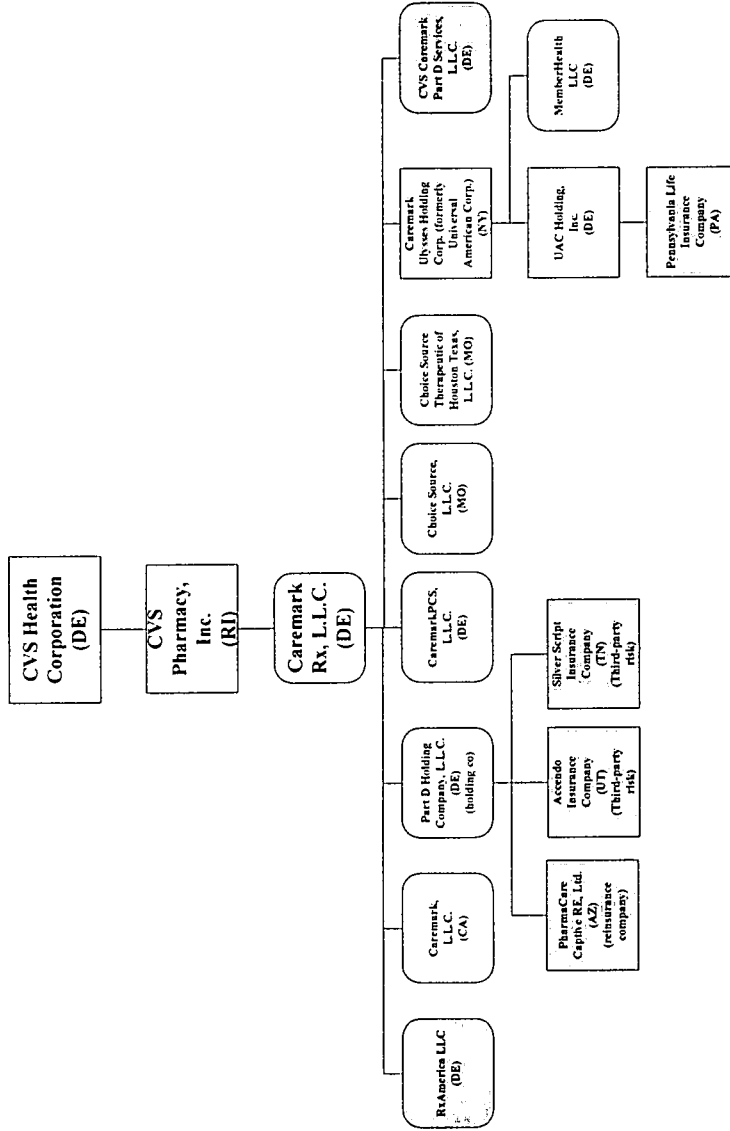
<sup>1</sup> Alabama CVS Pharmacy, L.L.C. (AL) AL Stores  
 Connecticut CVS Pharmacy, L.L.C. (CT) CT Stores  
 Delaware CVS Pharmacy, L.L.C. (DE) DE Stores  
 Florida CVS Pharmacy, L.L.C. (FL) FL Stores  
 Georgia CVS Pharmacy, L.L.C. (GA) GA Stores  
 Idaho CVS Pharmacy, L.L.C. (ID) ID Stores  
 Illinois CVS Pharmacy, L.L.C. (IL) IL Stores  
 Indiana CVS Pharmacy, L.L.C. (IN) IN Stores  
 Iowa CVS Pharmacy, L.L.C. (IA) IA Stores  
 Kentucky CVS Pharmacy, L.L.C. (KY) KY Stores  
 Maryland CVS Pharmacy, L.L.C. (MD) MD Stores  
 Massachusetts CVS Pharmacy, L.L.C. (MA) MA Stores  
 Michigan CVS Pharmacy, L.L.C. (MI) MI Stores  
 Minnesota CVS Pharmacy, L.L.C. (MN) MN Stores  
 Missouri CVS Pharmacy, L.L.C. (MO) MO Stores  
 Montana CVS Pharmacy, L.L.C. (MT) MT Stores  
 Nebraska CVS Pharmacy, L.L.C. (NE) NE Stores  
 Nevada CVS Pharmacy, L.L.C. (NV) NV Stores  
 New Jersey CVS Pharmacy, L.L.C. (NJ) NJ Stores  
 North Carolina CVS Pharmacy, L.L.C. (NC) NC Stores  
 Oklahoma CVS Pharmacy, L.L.C. (OK) OK Stores  
 Rhode Island CVS Pharmacy, L.L.C. (RI) RI Stores  
 Tennessee CVS Pharmacy, L.L.C. (TN) TN Stores  
 Virginia CVS Pharmacy, L.L.C. (VA) VA Stores  
 Washington CVS Pharmacy, L.L.C. (WA) WA Stores  
 Wisconsin CVS Pharmacy, L.L.C. (WI) WI Stores  
 Wyoming CVS Pharmacy, L.L.C. (WY) WY Stores

<sup>2</sup> Alaska CVS Pharmacy, L.L.C. (AK) AK Stores  
 American Drug Stores Delaware, L.L.C. (DE) ND Stores  
 Arkansas CVS Pharmacy, L.L.C. (AR) AR Stores  
 CareCenter Pharmacy, L.L.C. (DE) GA, IL, MD, MI, MN, MO, MS, NC, NJ, OH, PA, TN, TX, VA, and WI Stores  
 CVS 2948 Henderson, L.L.C. (NV) NV Stores  
 CVS Albany, L.L.C. (NY) NY Stores  
 CVS Manchester NH, L.L.C. (NH) NH Stores  
 CVS State Capital, L.L.C. (ME) ME Stores  
 District of Columbia CVS Pharmacy, L.L.C. (DC) DC Stores  
 Garfield Beach CVS, L.L.C. (CA) CA Stores  
 Georgia CVS Pharmacy, L.L.C. (GA) GA Stores  
 German Duboune CVS, L.L.C. (AZ) AZ Stores  
 Grand St. Paul CVS, L.L.C. (MS) MS Stores  
 Highland Park CVS, L.L.C. (IL) IL Stores  
 Holiday CVS, L.L.C. (FL) FL Stores  
 Hooks-SuperX, L.L.C. (IN) IN Stores

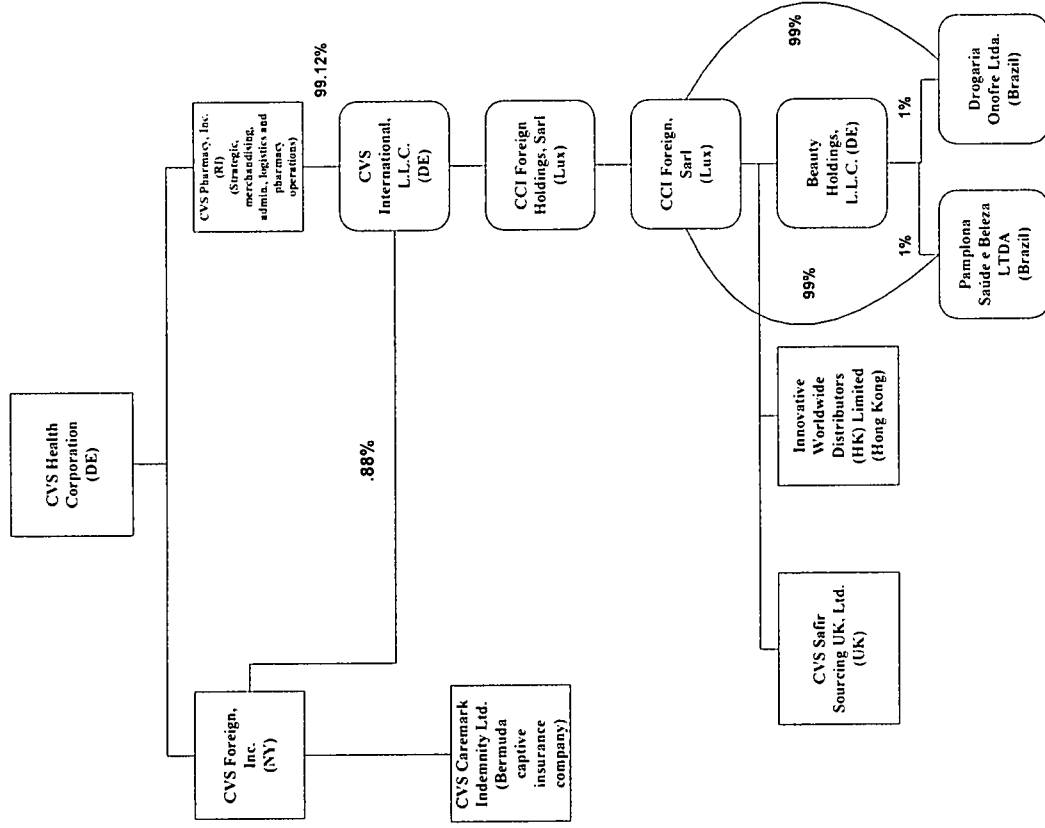
<sup>3</sup> Idaho CVS Pharmacy, L.L.C. (ID) ID Stores  
 Kansas CVS Pharmacy, L.L.C. (KS) KS Stores  
 Louisiana CVS Pharmacy, L.L.C. (LA) LA Stores  
 Mississippi CVS Pharmacy, L.L.C. (MS) MS Stores  
 Missouri CVS Pharmacy, L.L.C. (MO) MO Stores  
 Montana CVS Pharmacy, L.L.C. (MT) MT Stores  
 Nebraska CVS Pharmacy, L.L.C. (NE) NE Stores  
 Ohio CVS Stores, L.L.C. (OH) OH Stores  
 Oregon CVS Pharmacy, L.L.C. (OR) OR Stores  
 Pennsylvania CVS Pharmacy, L.L.C. (PA) PA Stores  
 South Carolina CVS Pharmacy, L.L.C. (SC) SC Stores  
 Utah CVS Pharmacy, L.L.C. (UT) UT Stores  
 Vermont CVS Pharmacy, L.L.C. (VT) VT Stores  
 Warm Springs Road CVS, L.L.C. (NV) NV Stores  
 Washington CVS Pharmacy, L.L.C. (WA) WA Stores  
 West Virginia CVS Pharmacy, L.L.C. (WV) WV Stores  
 Wisconsin CVS Pharmacy, L.L.C. (WI) WI Stores  
 Wyoming CVS Pharmacy, L.L.C. (WY) WY Stores



**CVS Caremark**  
**MEDICARE PART D**  
 Active Med D Companies Highlighted



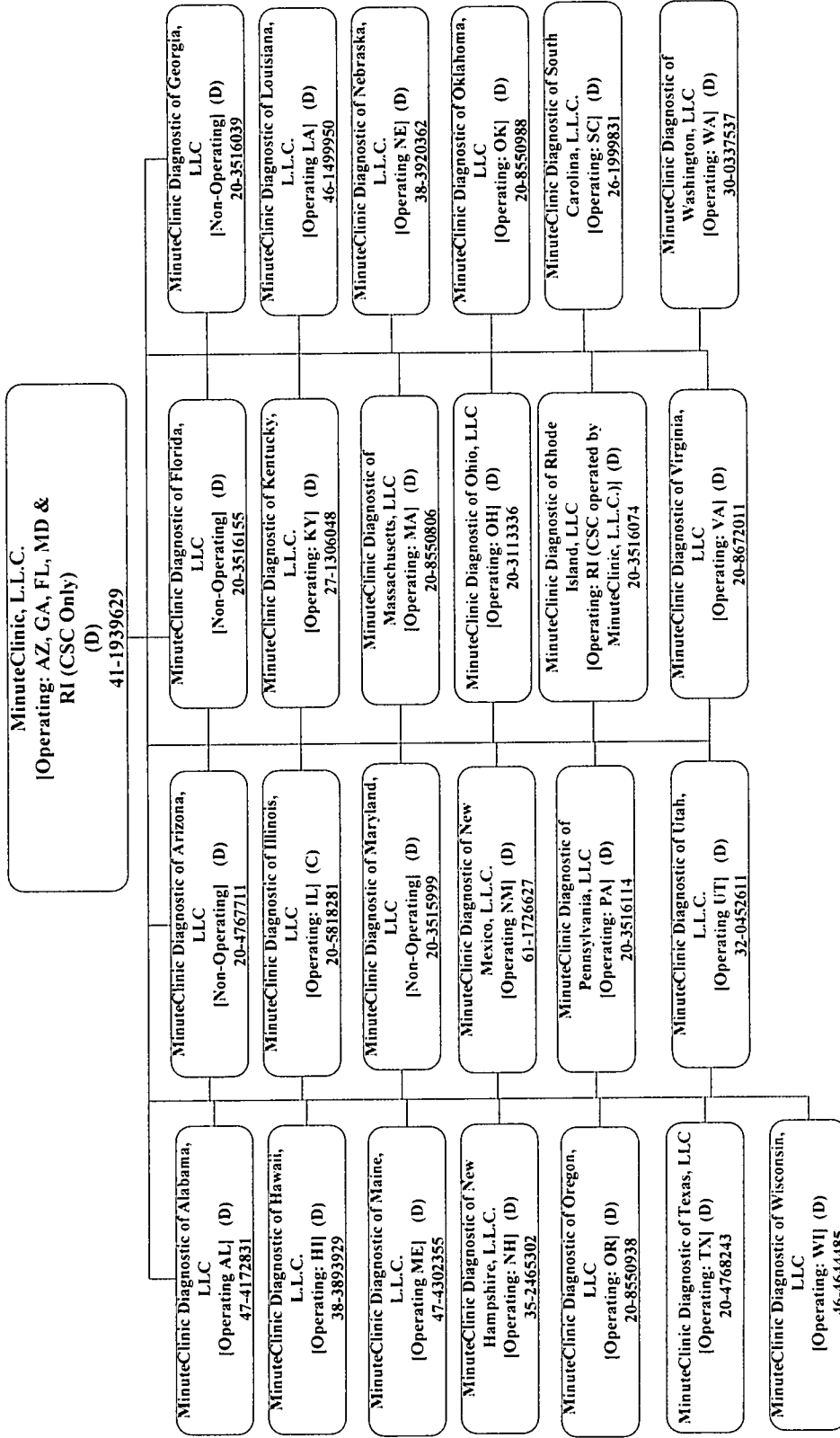
**CVS Health International Structure**







MINUTECLINIC, L.L.C. AND ITS SUBSIDIARIES



**MINUTECLINIC  
PRACTITIONER-OWNED ENTITIES**

MinuteClinic Diagnostic Medical Group of California, Inc.  
[Operating: Los Angeles, CA]  
(C)  
42-1731802

MinuteClinic Diagnostic Medical Group of Orange County, Inc.  
[Operating: Orange County, CA]  
(C)  
26-0844287

MinuteClinic Diagnostic of San Diego, Inc.  
[Operating: San Diego, CA]  
(C)  
26-0844323

MC Diagnostic of Connecticut, P.C.  
[Operating: CT]  
(C)  
20-5414393

Eric C. Marshall, M.D., P.C. d/b/a MinuteClinic Diagnostic of the District of Columbia  
[Operating: DC]  
(C)  
20-8550517

MinuteClinic Diagnostics of Indiana, LLC  
[Operating: IN]  
(C)  
20-3207688

MinuteClinic Diagnostic of Kansas, P.A..  
[Operating: KS&MO\*]  
(C)  
\*Operates in MO under the name MinuteClinic Diagnostic of Kansas, P.C.  
20-5096637

MinuteClinic Diagnostic of Michigan, P.C.  
[Operating: MI]  
(C)  
20-4269269

MinuteClinic Diagnostic, P.A.  
[Operating: MN]  
(C)  
41-1952112

MinuteClinic Diagnostic of New Jersey, LLC  
[Operating: NJ]  
(C)  
20-4868967

George Safran, M.D., P.C.  
(formerly Kimberly J. Henderson, M.D., P.C.)  
[Operating: NY: Effective 3/28/10]  
(C)  
27-1511452

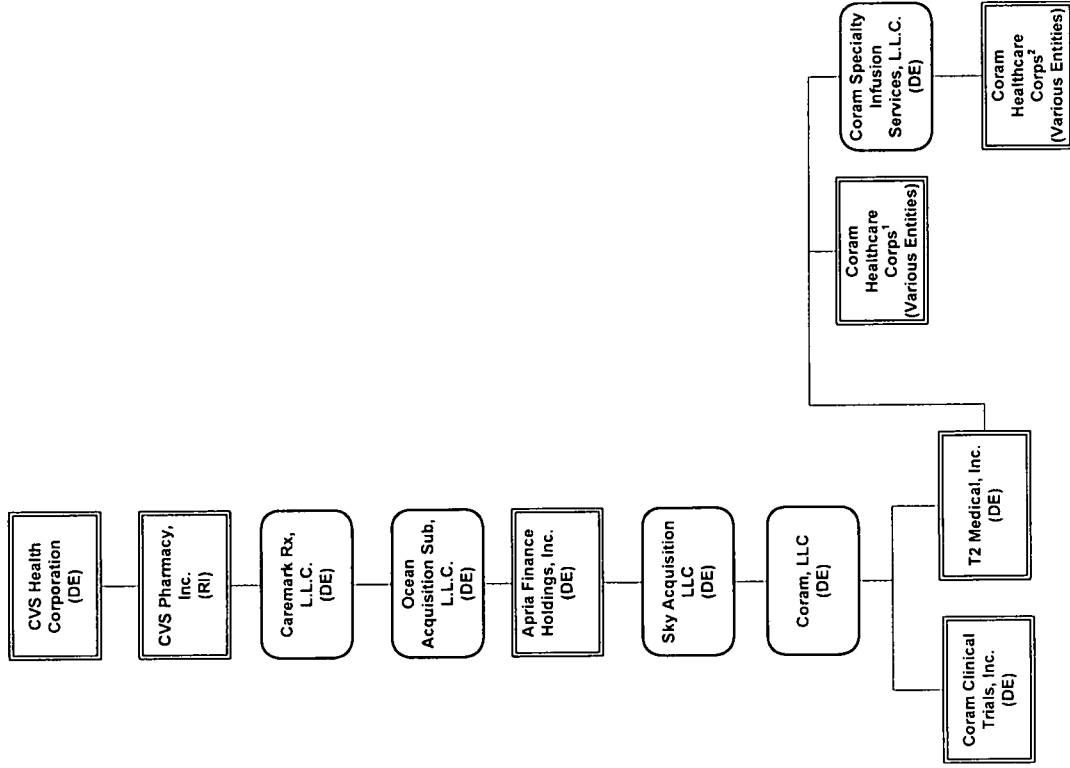
Parekh MinuteClinic of Nevada, P.C.\*  
[Operating: NV]  
(C)  
\*Operates under the d/b/a/ MinuteClinic Diagnostic of Nevada  
20-5793559

MinuteClinic Diagnostic of North Carolina, P.C.  
[Operating: NC]  
(C)  
20-3555819

MinuteClinic Diagnostic of Tennessee, P.C.  
[Operating: TN]  
(C)  
20-3348922

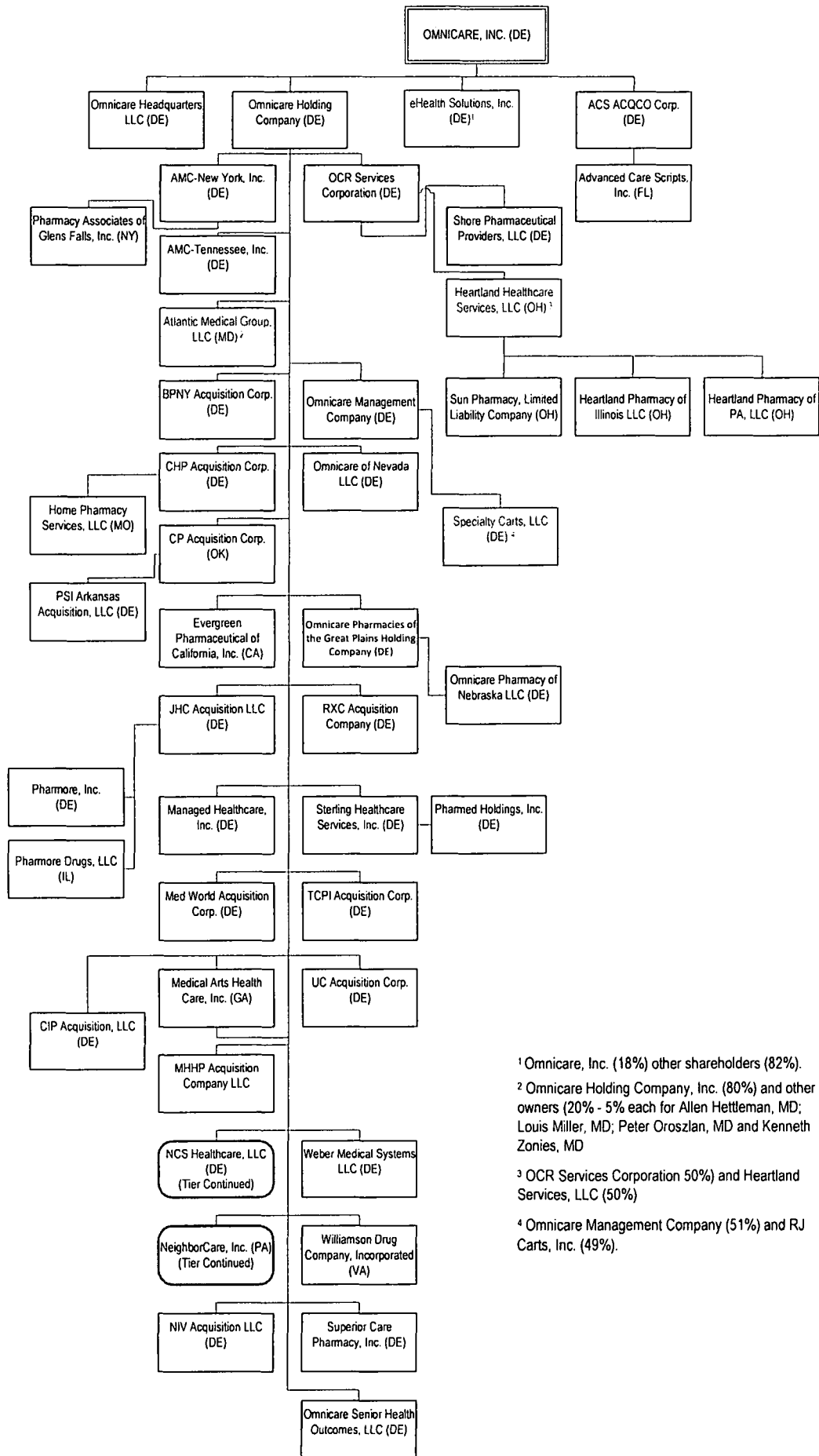
MinuteClinic Diagnostic of Minnesota, P.A.  
[Operating: MN]  
(C)  
47-5140770

**Coram**  
**CVS Specialty**



<sup>1</sup>  
 Coram Healthcare Corporation of Alabama  
 Coram Healthcare Corporation of Indiana  
 Coram Healthcare Corporation of Mississippi  
 Coram Healthcare Corporation of Southern California  
 Coram Healthcare Corporation of Florida  
 Coram Healthcare Corporation of Greater D.C.  
 Coram Healthcare Corporation of Greater New York  
 Coram Healthcare Corporation of Nevada  
 Coram Healthcare Corporation of Northern California  
 Coram Healthcare Corporation of Southern Florida

<sup>2</sup>  
 CoramRx, LLC  
 Coram Healthcare Corporation of North Texas  
 Coram Healthcare Corporation of Utah  
 Coram Alternate Site Services, Inc.  
 Coram Healthcare Corporation of Massachusetts  
 Coram Healthcare/Carolina Home Therapeutics, LLC (51%)



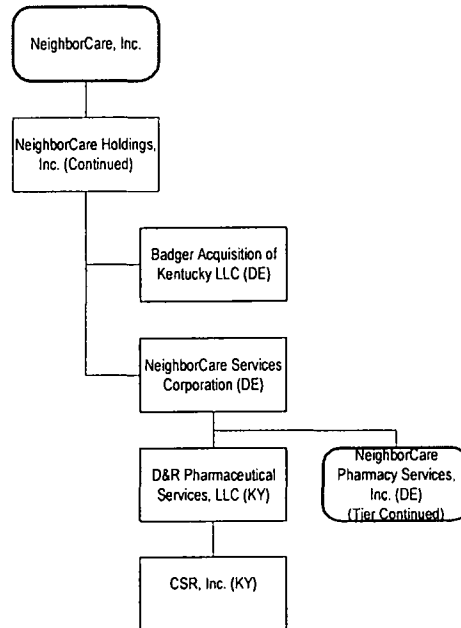
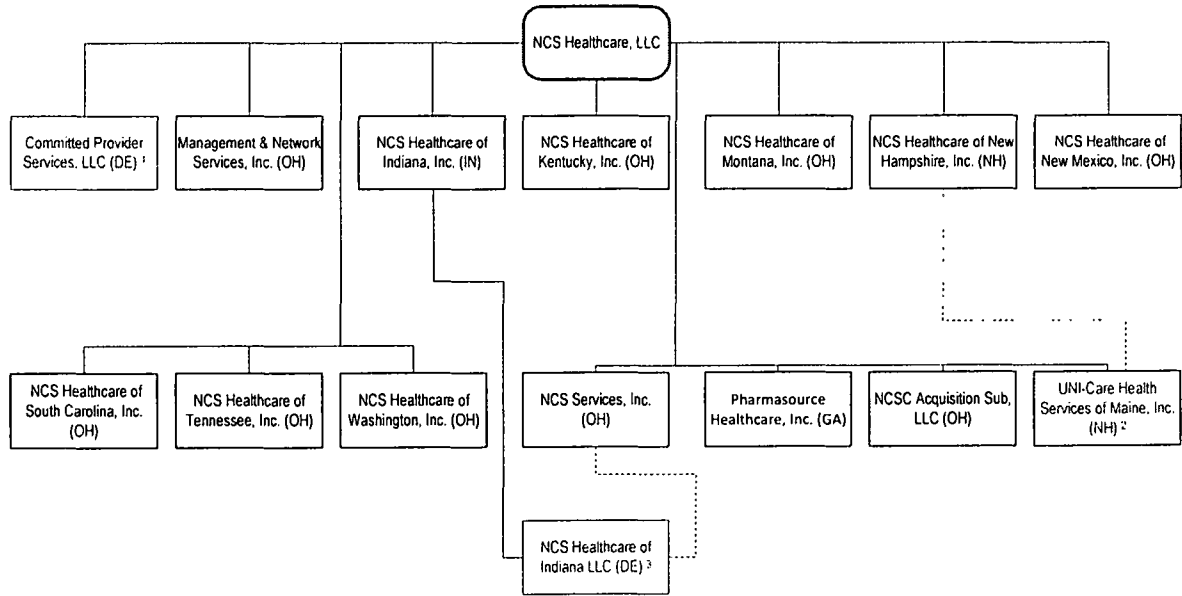
<sup>1</sup> Omnicare, Inc. (18%) other shareholders (82%).

<sup>2</sup> Omnicare Holding Company, Inc. (80%) and other owners (20% - 5% each for Allen Hettleman, MD; Louis Miller, MD; Peter Oroszlan, MD and Kenneth Zonies, MD)

<sup>3</sup> OCR Services Corporation 50% and Heartland Services, LLC (50%)

<sup>4</sup> Omnicare Management Company (51%) and RJ Carts, Inc. (49%).

Company breakdown continued....

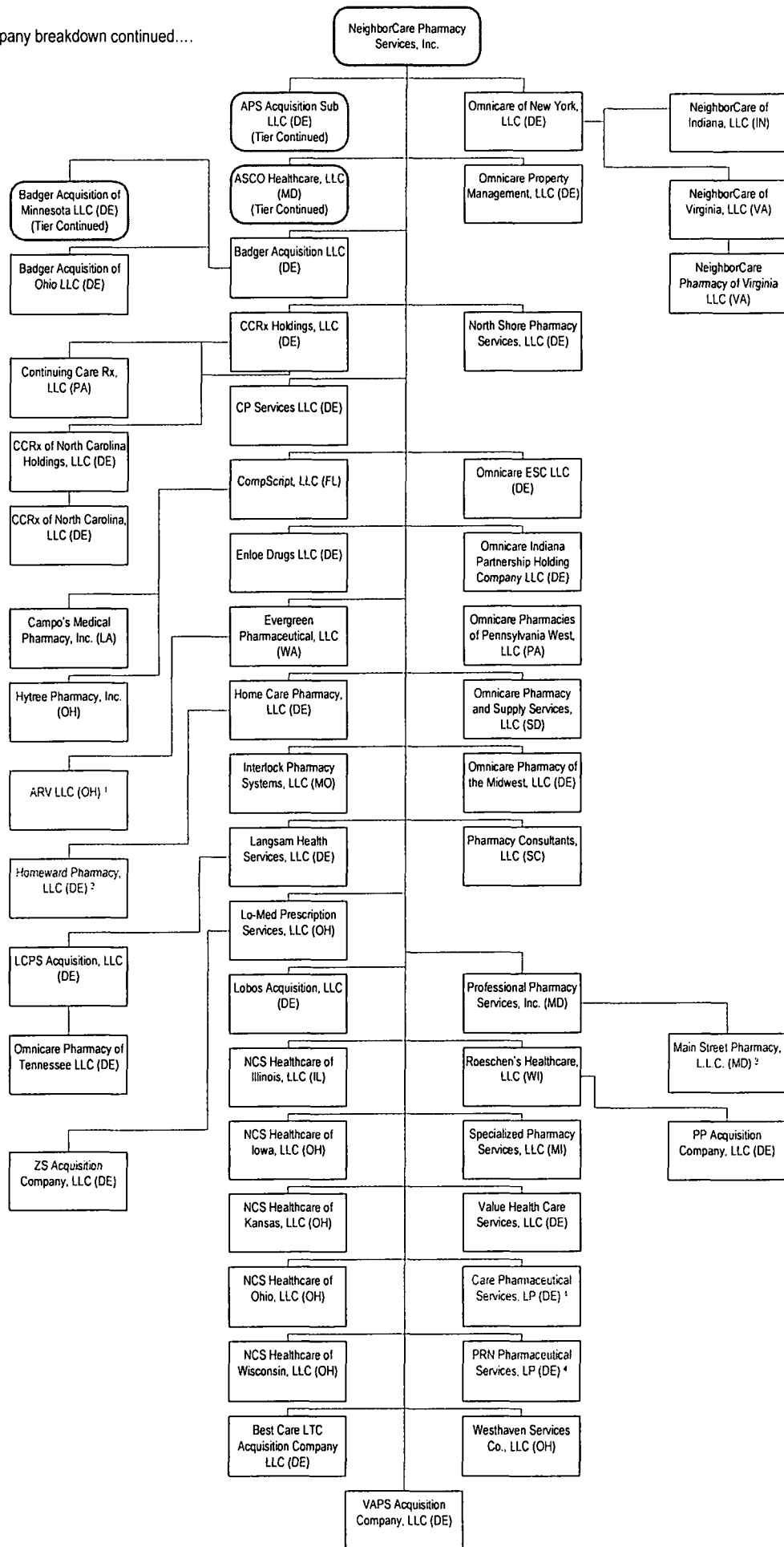


<sup>1</sup> NCS Healthcare, LLC (10%) and Bergen Brunswick (80%).

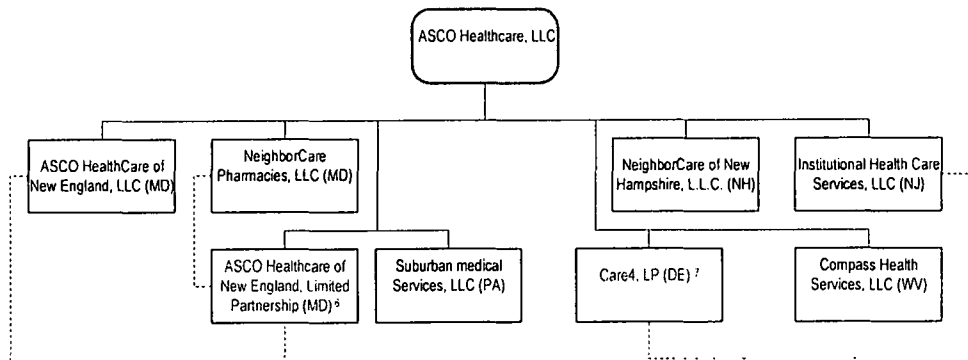
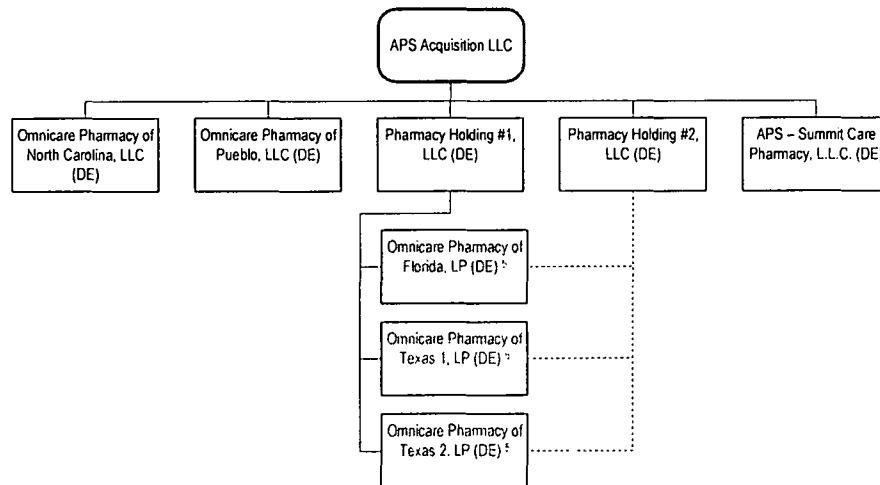
<sup>2</sup> NCS Healthcare, LLC (13%) and NCS Healthcare of New Hampshire, Inc. (87%).

<sup>3</sup> NCS Services, Inc. (1%) and NCS HealthCare of Indiana, Inc. (99%)

Company breakdown continued....



Company breakdown continued....



<sup>1</sup> Evergreen Pharmaceutical, LLC owns (50%) and ARV Assisted Living, Inc. (50%).

<sup>2</sup> Home Care Pharmacy, LLC (50%) other owner (50%).

<sup>3</sup> Professional Pharmacy Services, Inc. (99%) and NeighborCare Pharmacies, LLC (1%).

<sup>4</sup> NeighborCare Pharmacy Services, Inc. (99%) and Omnicare Indiana Partnership Holding Company LLC (1%).

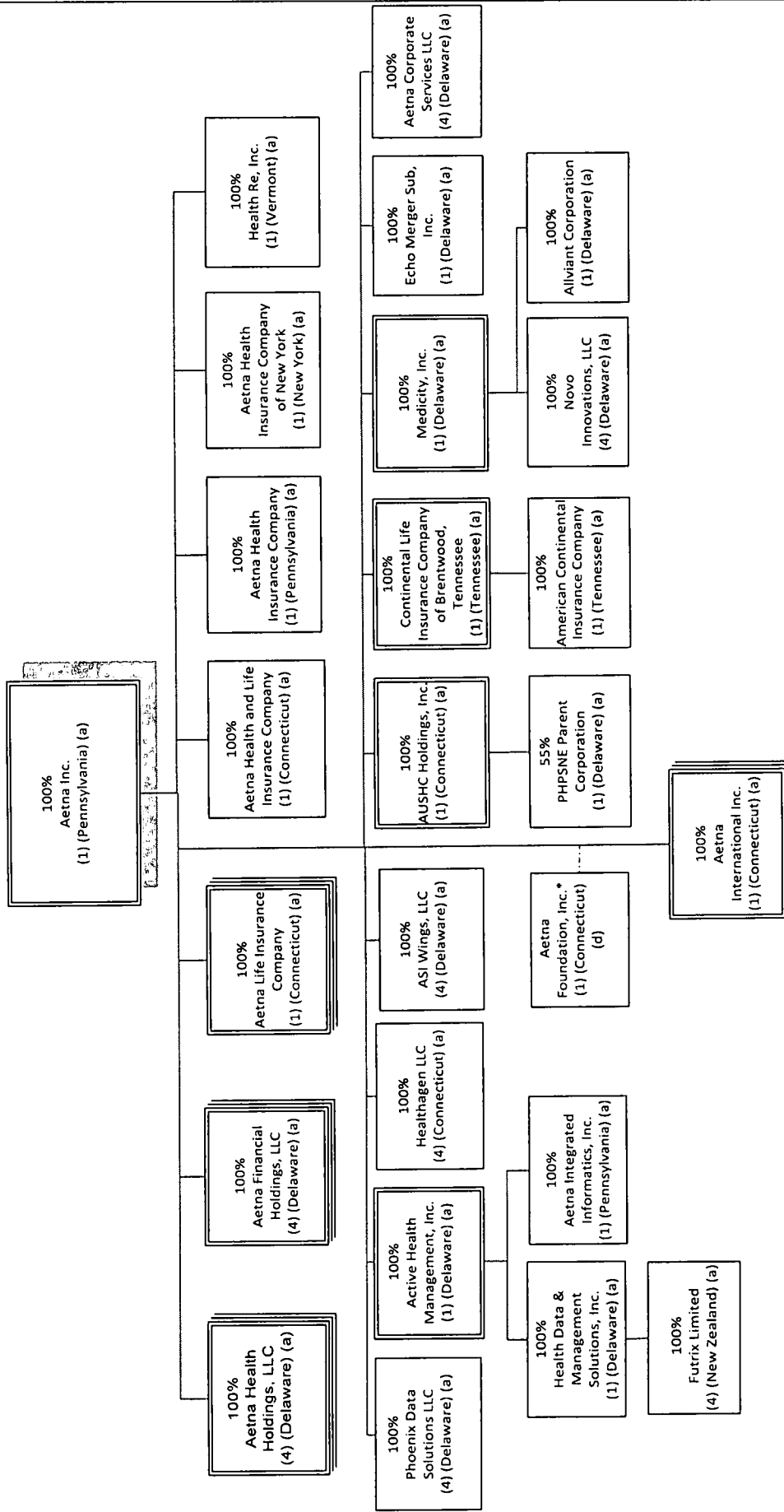
<sup>5</sup> Pharmacy Holding #1, LLC (99%) and Pharmacy Holding #2, LLC (1%).

<sup>6</sup> ASCO HealthCare, LLC (54.5%), NeighborCare Pharmacies, LLC (44.5%) and ASCO Healthcare of New England, LLC (1%)

<sup>7</sup> ASCO HealthCare, LLC (99.5%) and Institutional Health Care Services, LLC (.05%).



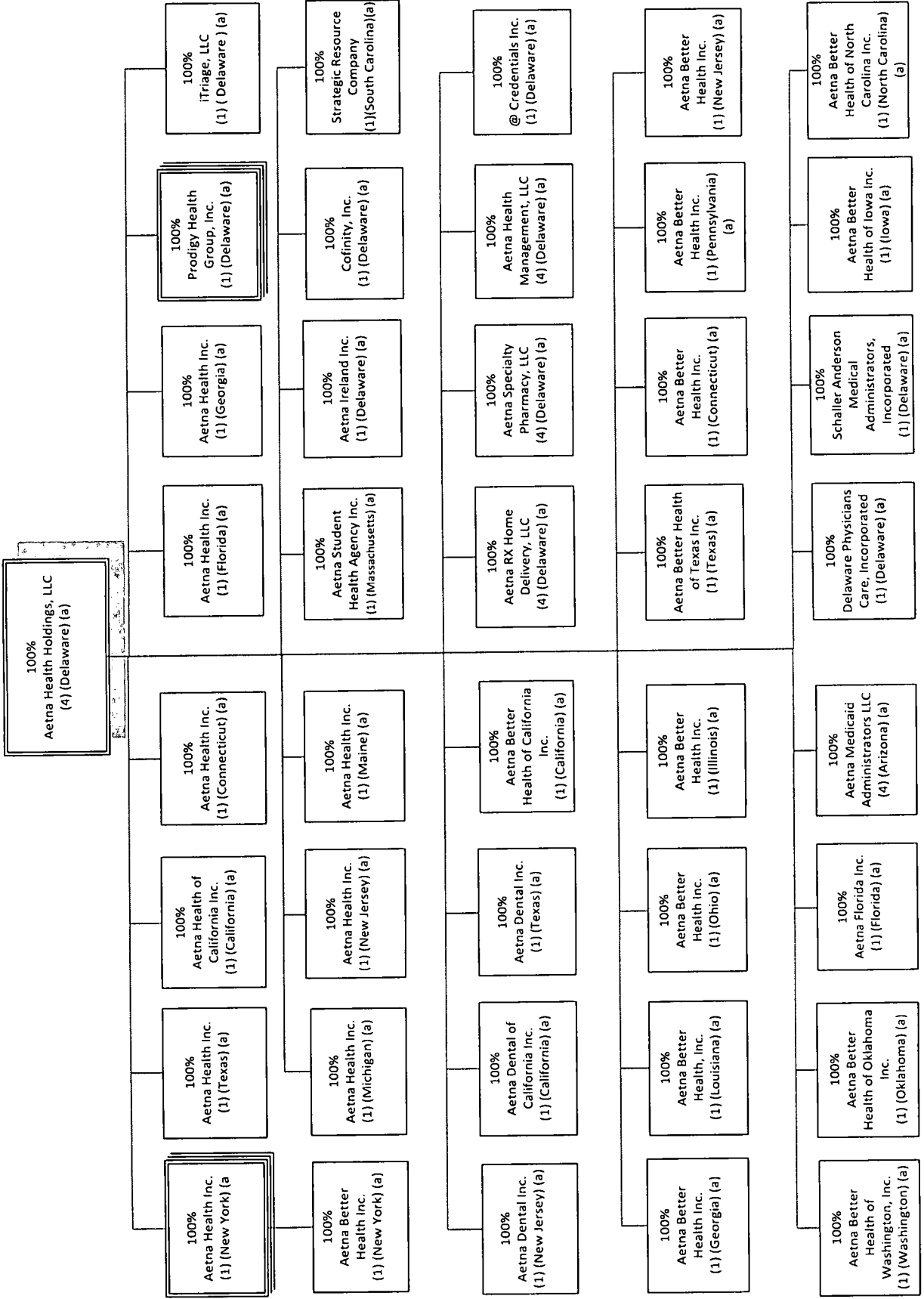
**Aetna Inc. Organization Chart**  
As of December 5, 2017

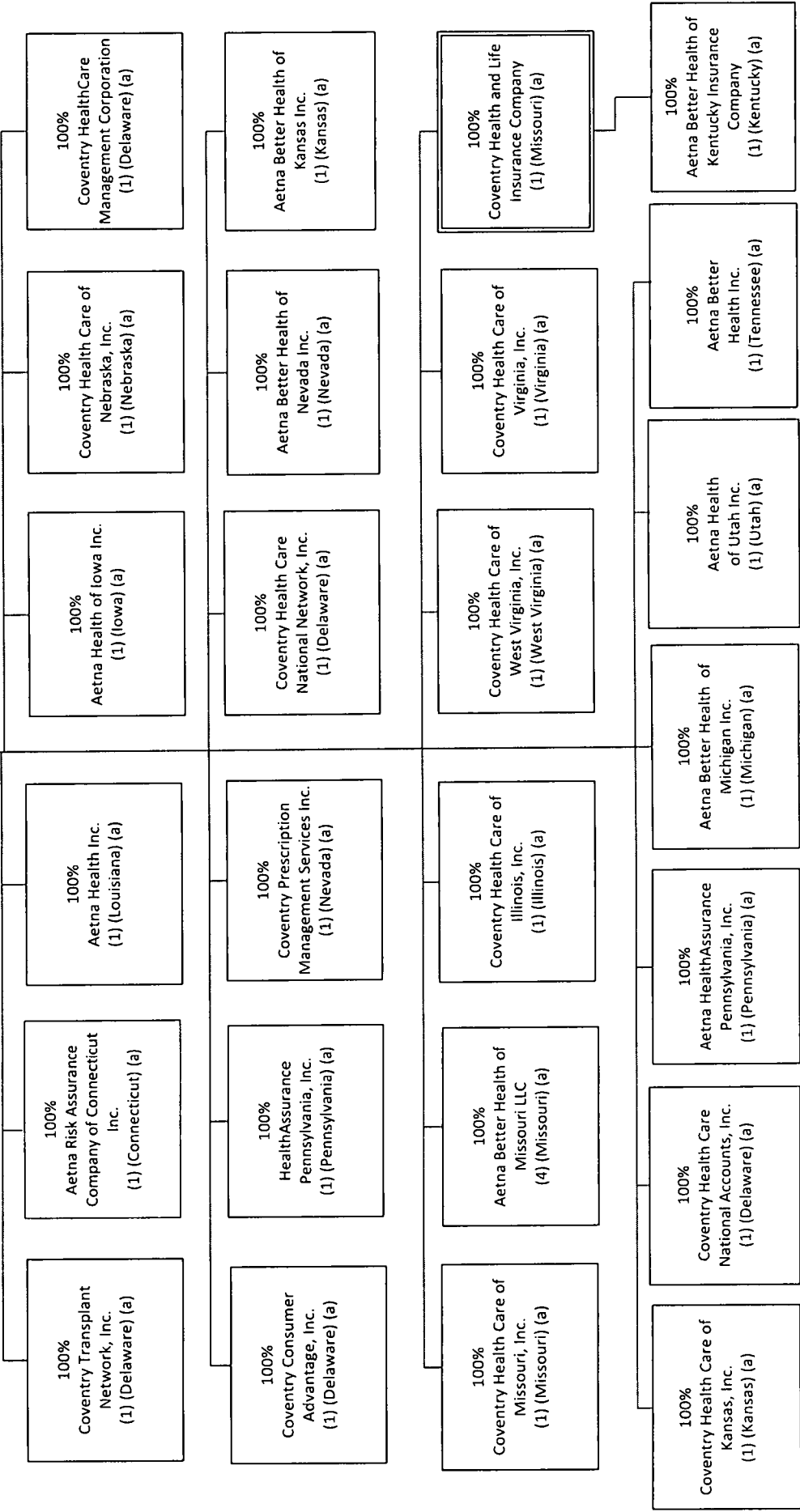
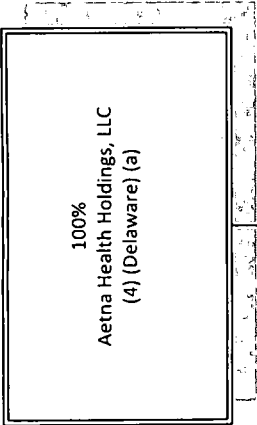


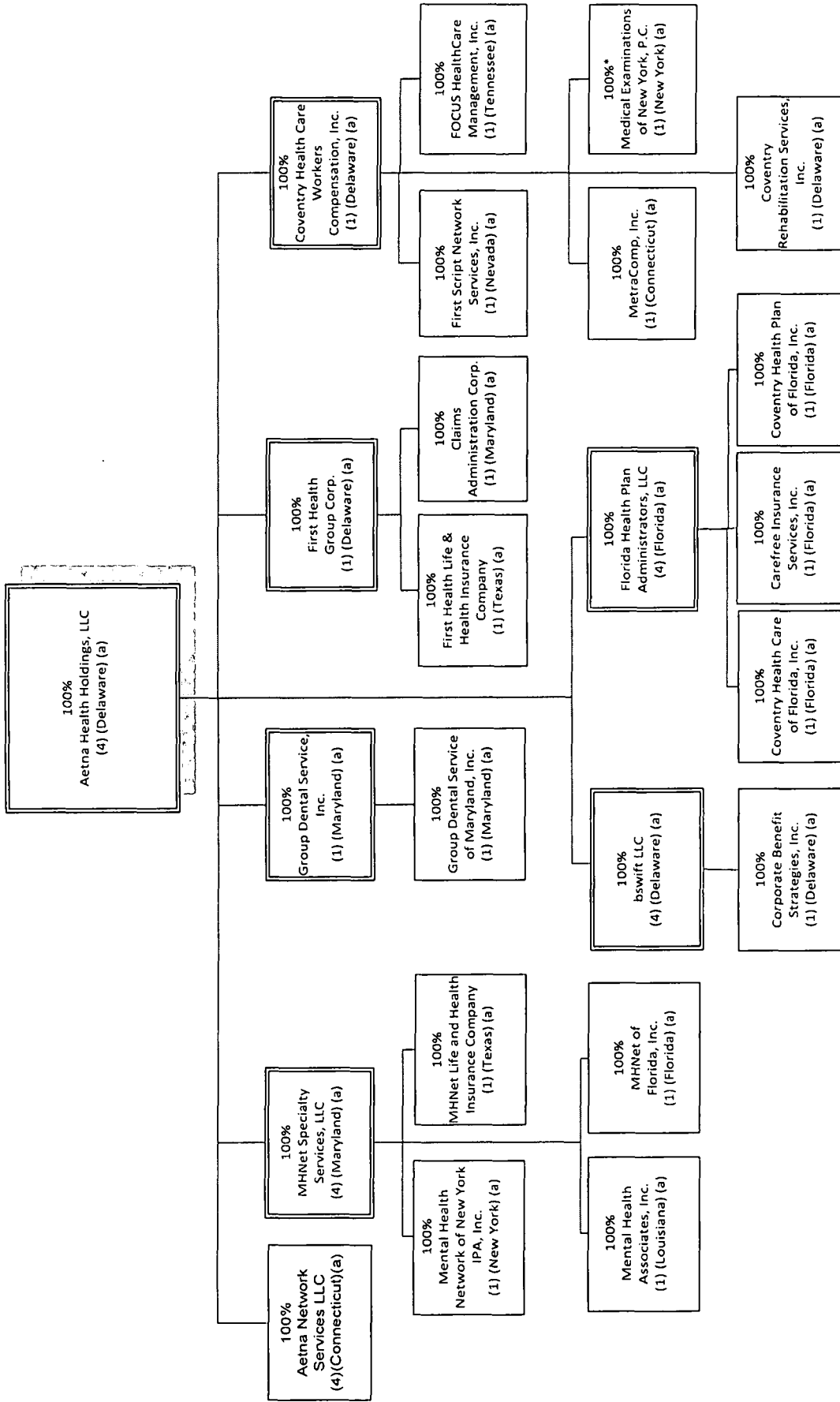
- (1) Corporation
- (2) Partnership
- (3) Joint Venture
- (4) Limited Liability Company
- (5) Trust
- (a) Consolidated
- (b) One Line Consolidation (i.e., equity method)
- (c) Separate Account Asset
- (d) Not consolidated

Percentages are rounded to nearest whole percent and are based on ownership of voting rights.  
\* Nonstock Corporation: Aetna does not control this entity. Stand-alone.

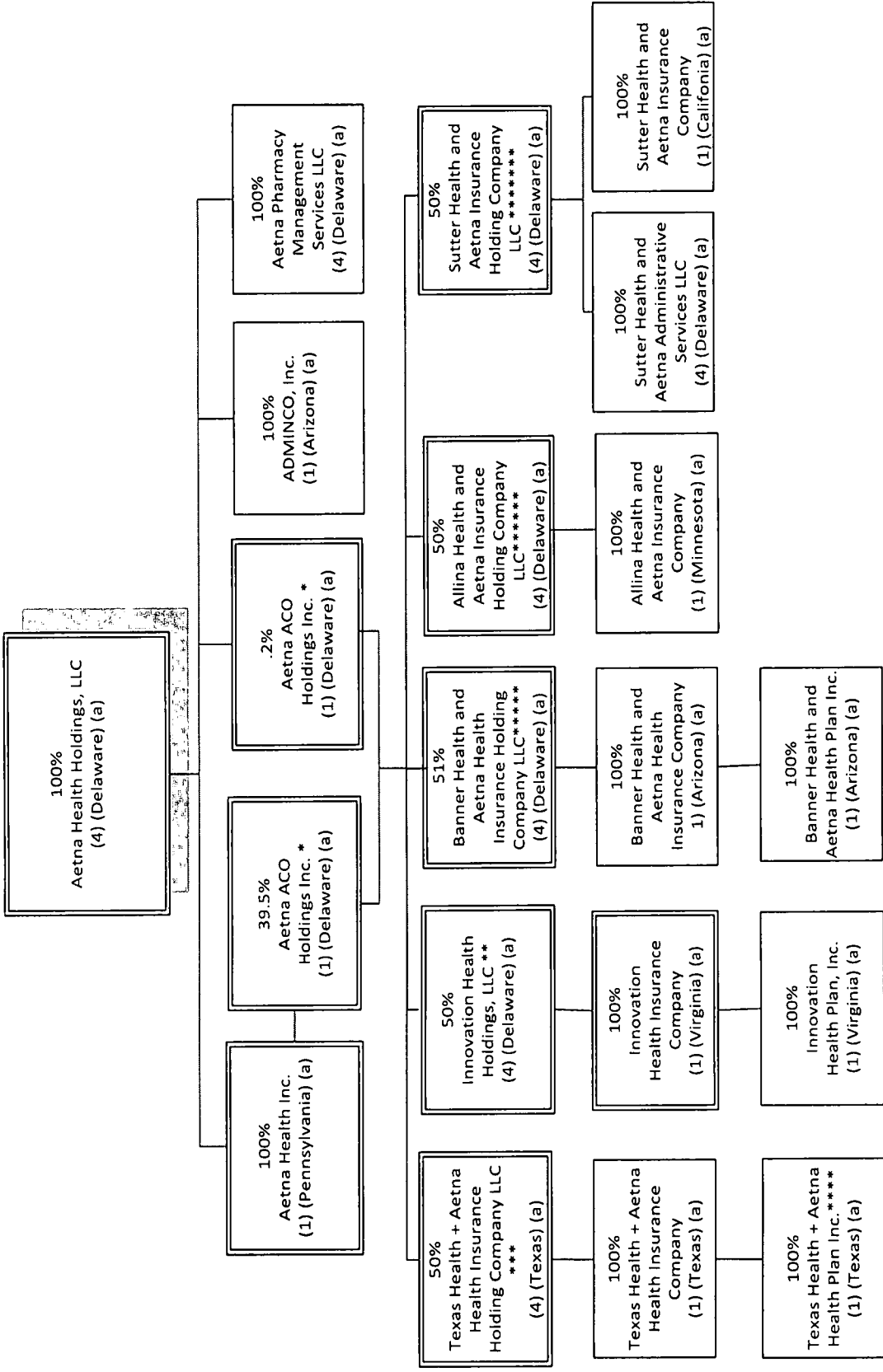




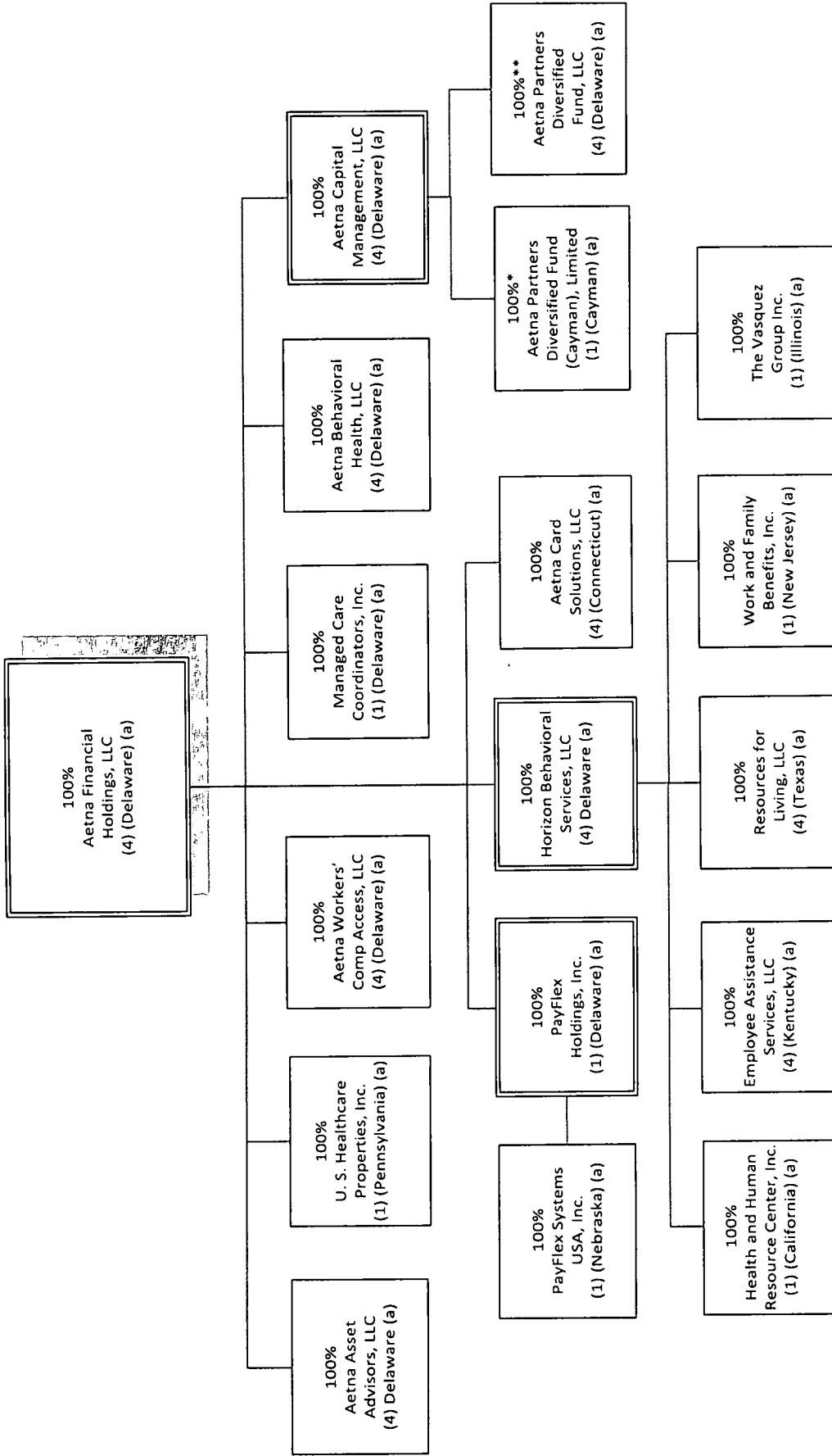




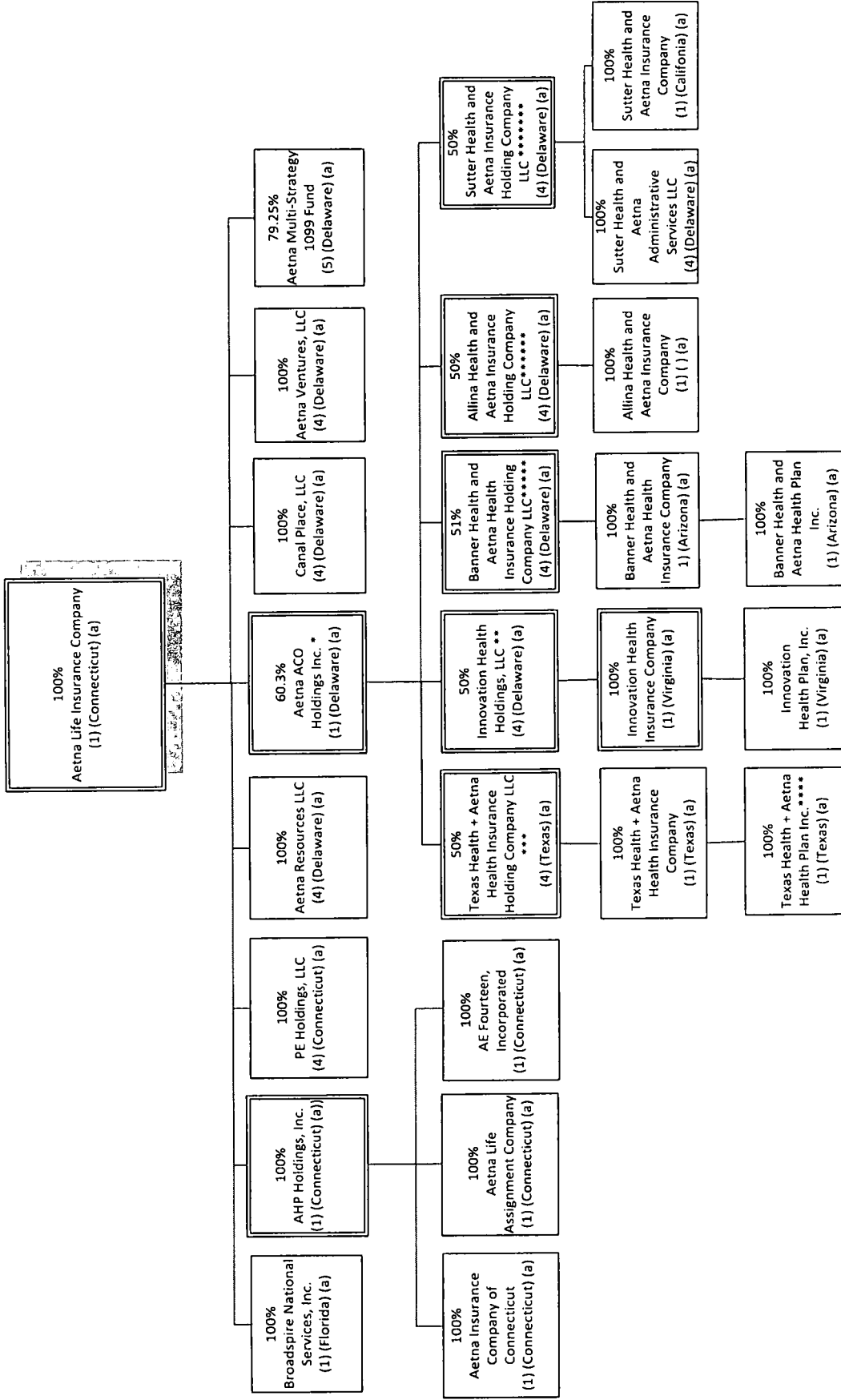
\*100% owned through Aetna's Nominees



\* Aetna ACO Holdings Inc. is owned by Aetna Life Insurance Company (302 shares); Aetna Health Inc. (PA) (198 shares); and Aetna Health Holdings, LLC (1 share).  
 \*\* Innovation Health Holdings, LLC is 50% owned by Aetna ACO Holdings Inc. and 50% owned by Inova Health System Foundation  
 \*\*\* Texas Health + Aetna Health Insurance Holding Company LLC is 50% owned by Aetna ACO Holdings Inc. and 50% owned by Texas Health Resources  
 \*\*\*\* Texas Health + Aetna Health Plan Inc. became a direct subsidiary of Texas Health + Aetna Health Insurance Company February 2017  
 \*\*\*\*\* Banner Health and Aetna Health Insurance Holding Company LLC is 51% owned by Aetna ACO Holdings Inc. and 49% owned by Banner Health  
 \*\*\*\*\* Allina Health and Aetna Insurance Holding Company LLC is 50% owned by Aetna ACO Holdings Inc.; and 50% owned by Allina Health  
 \*\*\*\*\* Sutter Health and Aetna Insurance Holding Company LLC is 50% owned by Aetna ACO Holdings Inc.; and 50% owned by Sutter Health Plan Products Organization, LLC



\* Aetna Life Insurance Company owns the Class C participating shares of Aetna Partners Diversified Fund (Cayman), Limited.  
 \*\* Aetna Life Insurance Company, Aetna Health and Life Insurance Company and Aetna Health Management own substantially all of the non-managing member interests of Aetna Partners Diversified Fund, LLC.



\* Aetna ACO Holdings Inc. is owned by Aetna Life Insurance Company (302 shares); Aetna Health Inc. (PA) (198 shares); and Aetna Health Holdings, LLC (1 share).

\*\* Innovation Health Holdings, LLC is 50% owned by Aetna ACO Holdings Inc. and 50% owned by Inova Health System Foundation

\*\*\* Texas Health + Aetna Health Insurance Holding Company LLC is 50% owned by Aetna ACO Holdings Inc. and 50% owned by Texas Health Resources

\*\*\*\* Texas Health + Aetna Health Plan Inc. became a direct subsidiary of Texas Health + Aetna Health Insurance Company February 2017

\*\*\*\*\* Banner Health and Aetna Health Insurance Holding Company LLC is 51% owned by Aetna ACO Holdings Inc. and 49% owned by Banner Health

\*\*\*\*\* Allina Health and Aetna Insurance Holding Company LLC is 50% owned by Aetna ACO Holdings Inc.; and 50% owned by Allina Health

\*\*\*\*\* Sutter Health and Aetna Insurance Holding Company LLC is 50% owned by Aetna ACO Holdings Inc.; and 50% owned by Sutter Health Plan Products Organization, LLC



