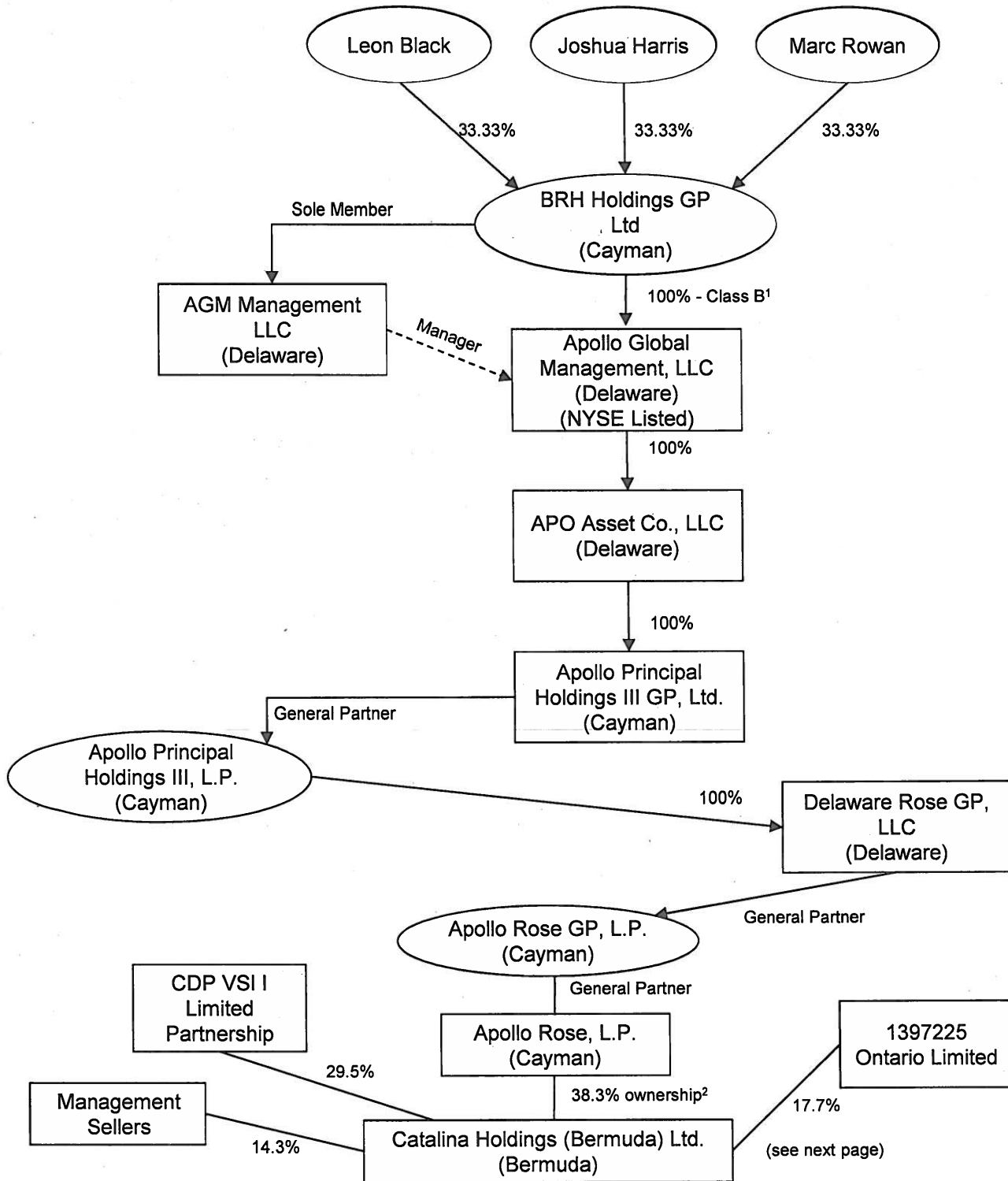


Pre-Acquisition AGM Control Chart

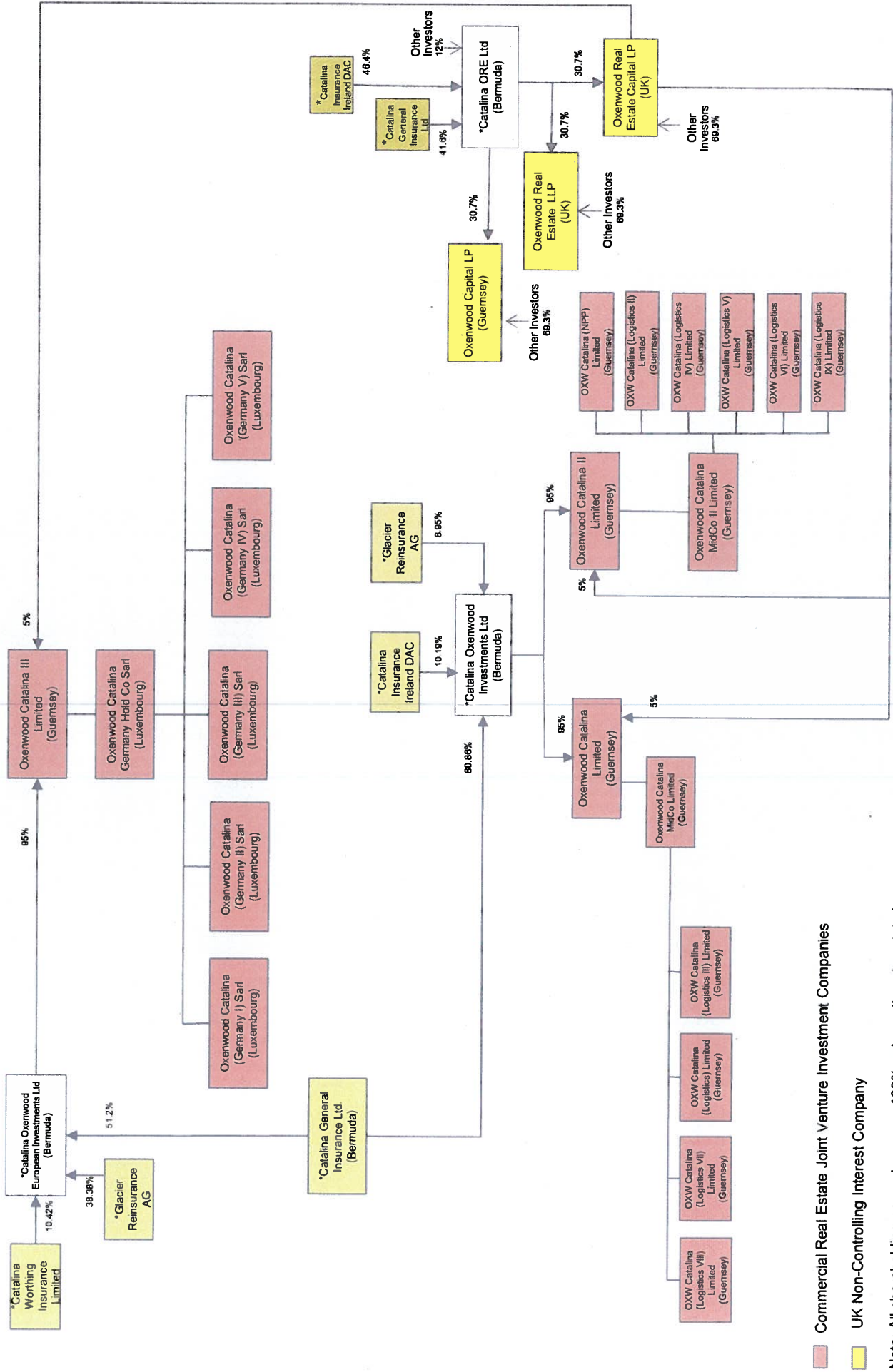


1 The Class B Shareholder, BRH Holdings GP, Ltd. (BRH), holds voting, non-economic interests in Apollo Global Management, LLC (AGM). No holder of AGM's voting Class A shares holds more than 10% of the combined Class A and B shares entitled to vote in AGM. The Class B share held by BRH represents 52.4% of the total voting power of AGM shares entitled to vote (as of March 31, 2018) but no economic interest in AGM.

2 Apollo Rose, L.P. has filed disclaimers of affiliation regarding Catalina's U.S. insurance subsidiaries, which disclaimers have not been disallowed.

Group corporate structure as at June 28, 2018

Part II: Group Commercial Real Estate Joint Venture Structure

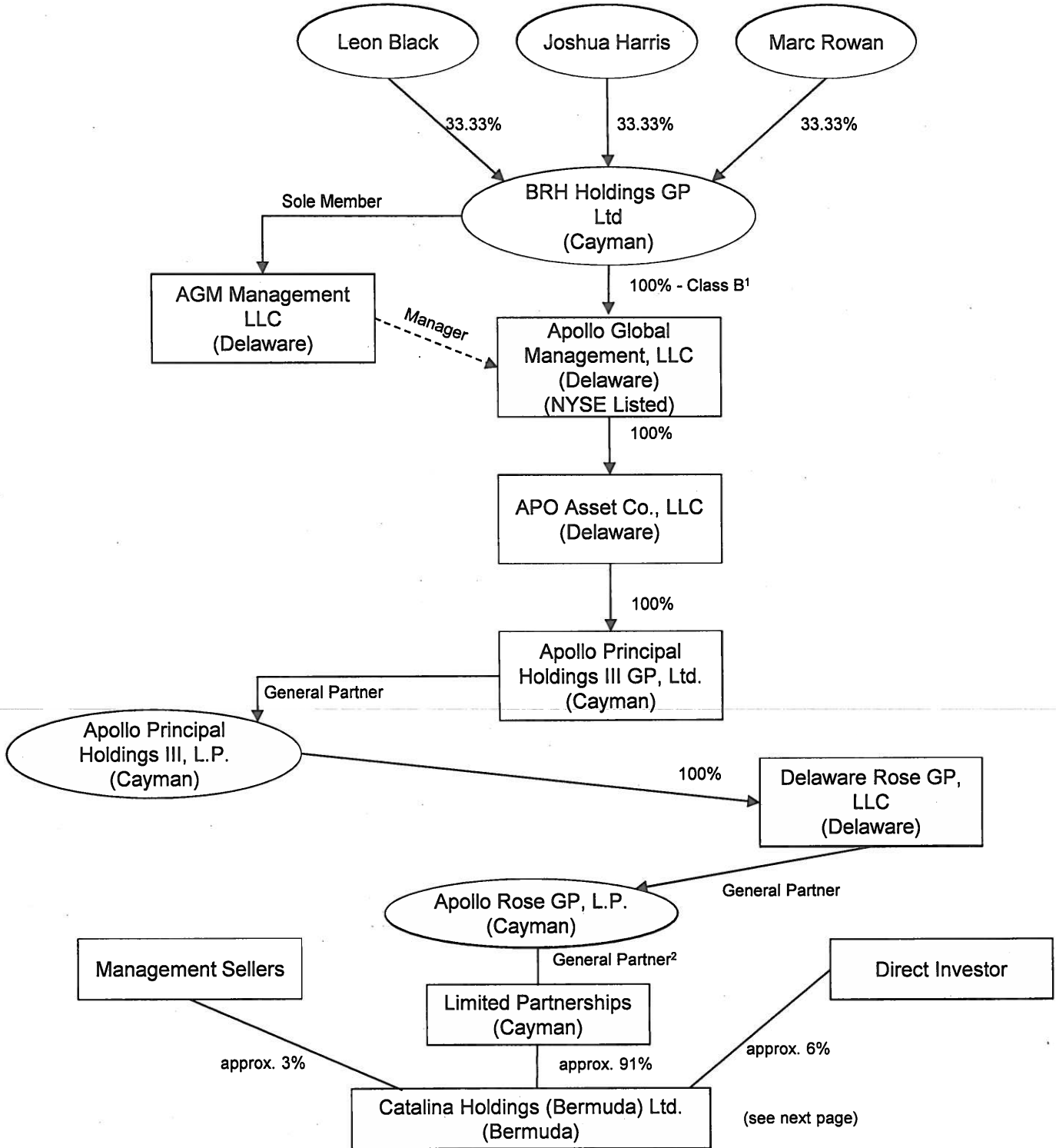


Commercial Real Estate Joint Venture Investment Companies

UK Non-Controlling Interest Company

Note: All shareholding percentages are 100% unless otherwise stated.

Post-Acquisition AGM Control Chart



1 The Class B Shareholder, BRH Holdings GP, Ltd. (BRH), holds voting, non-economic interests in Apollo Global Management, LLC (AGM). No holder of AGM's voting Class A shares holds more than 10% of the combined Class A and B shares entitled to vote in AGM. The Class B share held by BRH represents 52.4% of the total voting power of AGM shares entitled to vote (as of March 31, 2018) but no economic interest in AGM.

2 The Limited Partners of the Limited Partnerships are purely passive investors and have no control or voting power. Thus, the Limited Partners are not shown in the chain of control chart.

