

Exhibit B-2: Organizational Chart of the Applicants After the Proposed Transaction

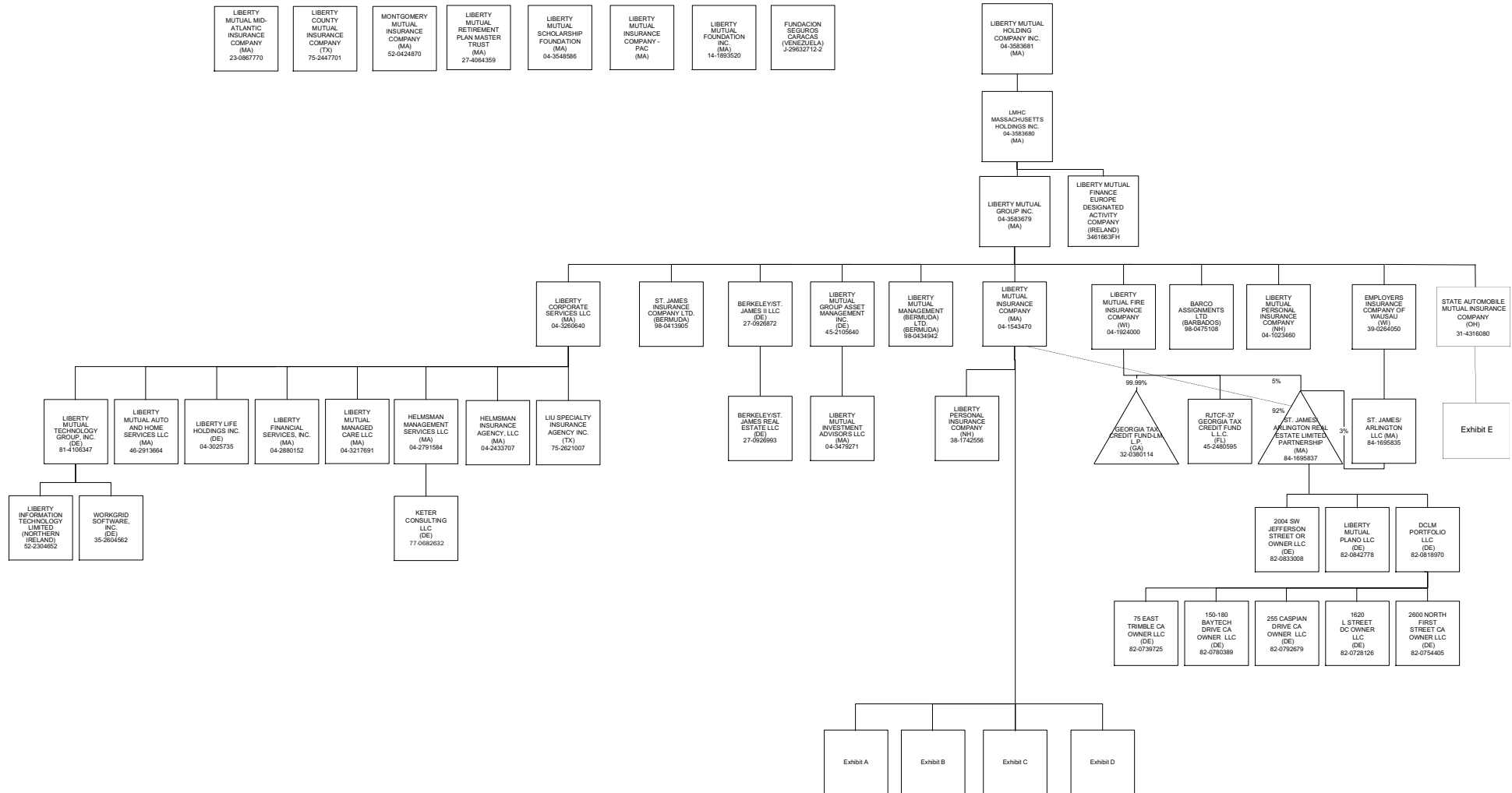


EXHIBIT B

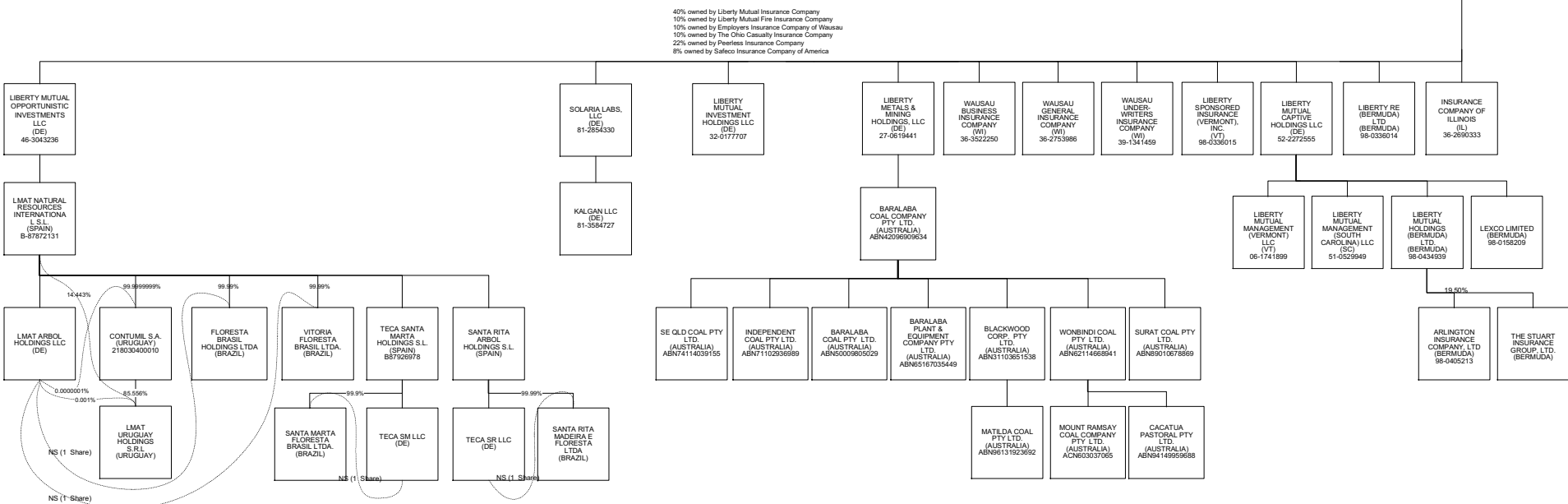
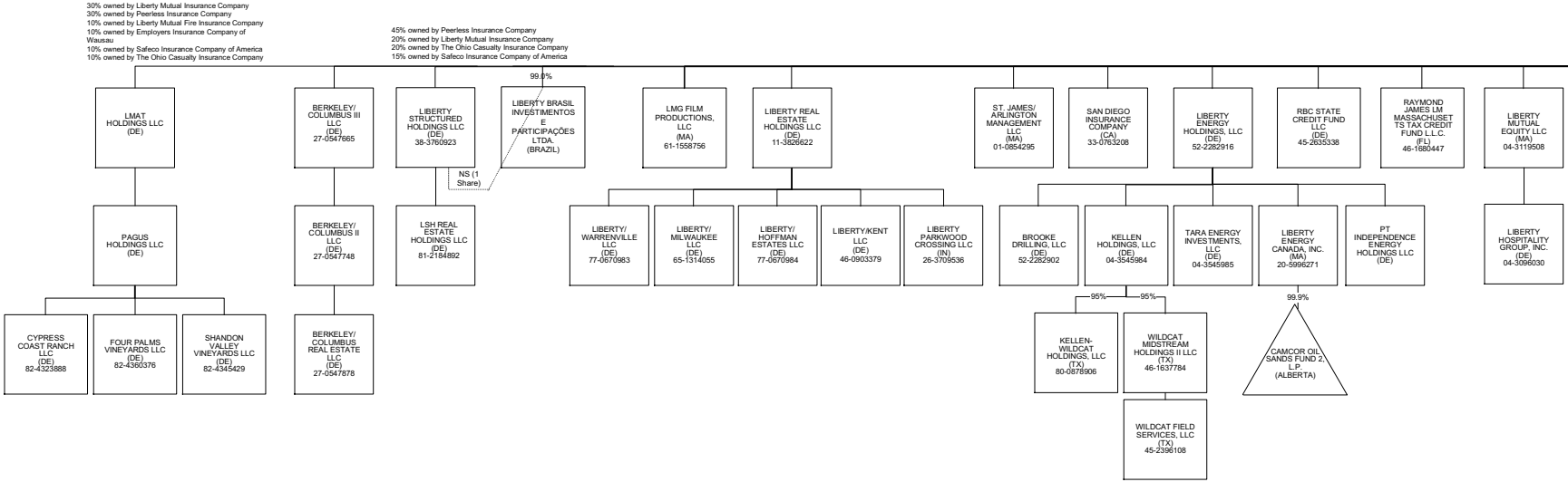


EXHIBIT C

8% owned by Peerless Insurance Company
8% owned by Employers Insurance Company of Wausau
8% owned by Liberty Mutual Fire Insurance Company
78% owned by Liberty Mutual Insurance Company

